
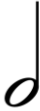
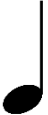



Music Staff

A set of 5 lines and 4 spaces which musical notes are written

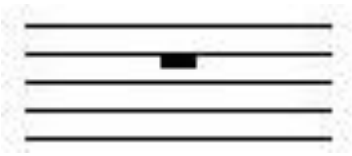

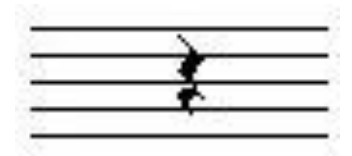
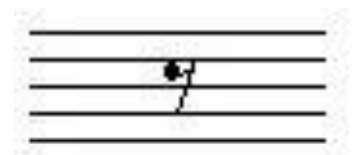
Notes Value

Notes	Note Name	Number of beats
	Whole Note	4 Beats
	Half Note	2 Beats
	Quarter Note	1 Beat
	Quaver Note	$\frac{1}{2}$ Beat

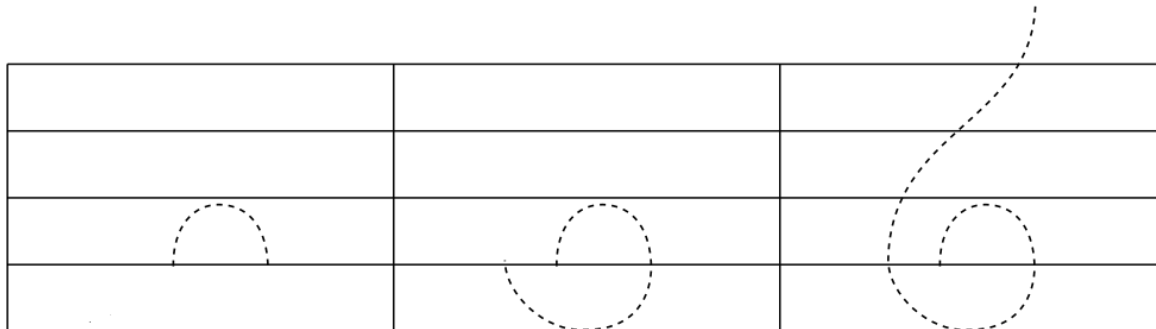
Tempo

The meaning of speed in music (Tempo)

Rests

Rests	Rests Name	Number of beats
	Whole Rest	4 Beats Rest
	Half Rest	2 Beats Rest
	Quarter Rest	1 Beat Rest
	Quaver Rest	$\frac{1}{2}$ Beat Rest

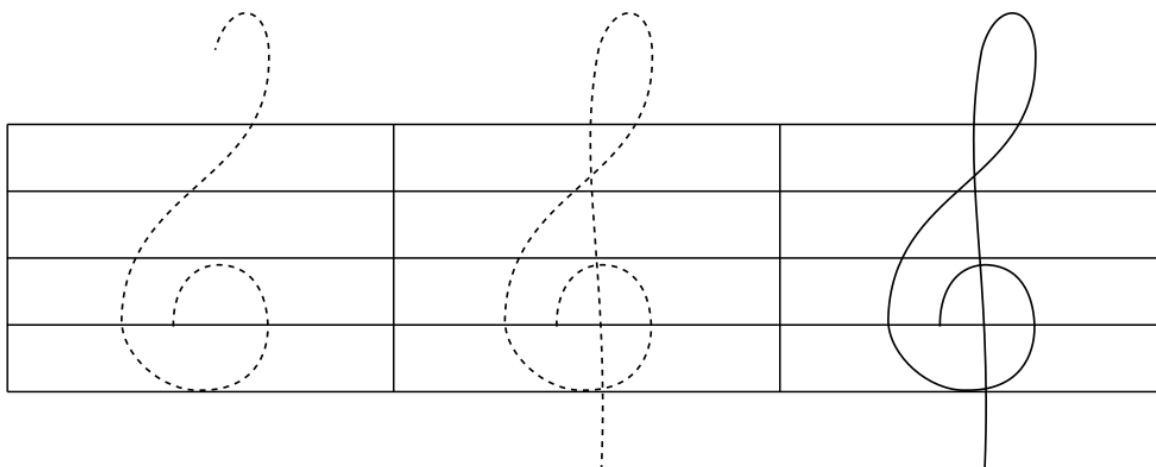
How to draw the treble – G clef



draw from the 2nd line

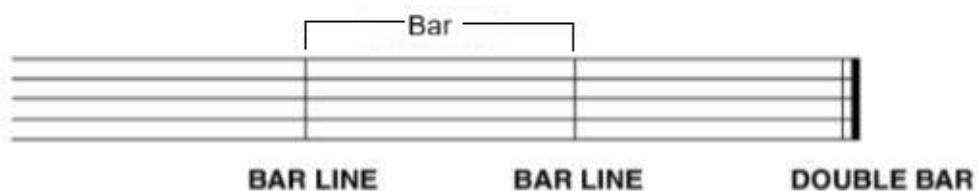
Between 1st & 3rd line

Move upward on the music staff.



Go down in a straight line below the music staff.

Bar & Bar line



Time signature

A time signature shows how many beats are in each Bar and which note value gets one beat.

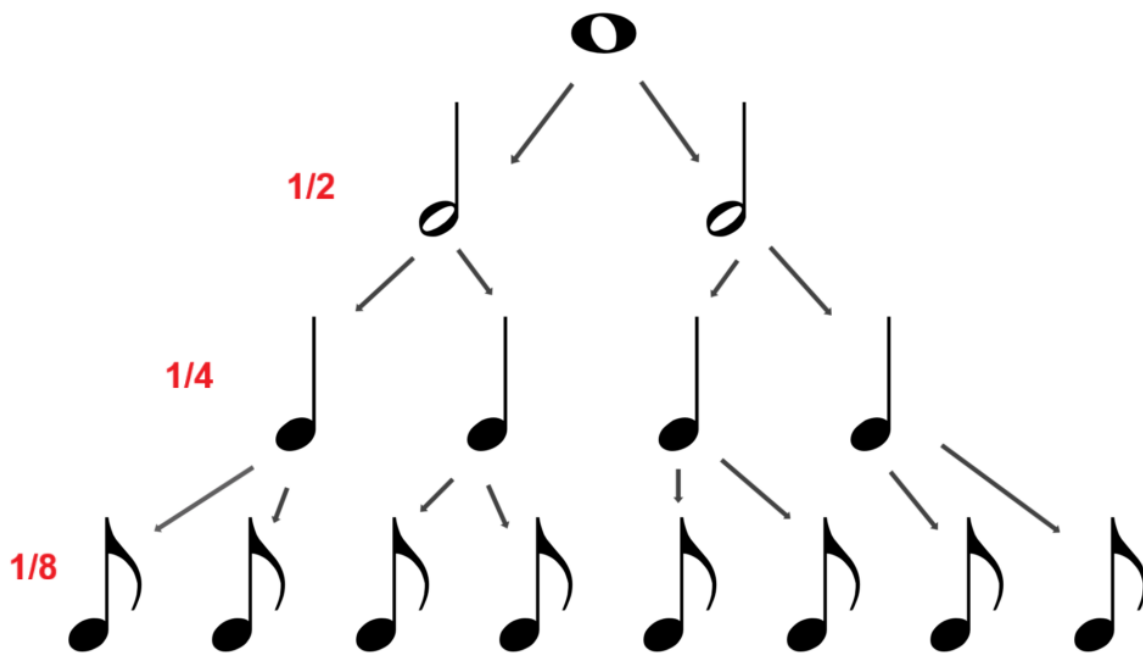
Top number

How many beats in each bar

Bottom number

What type of beats they are

Type of Beats



Examples:

2 : 2 Beats per Bar

4 : Type of beats from quarter note

6 : 6 Beats per Bar

8 : Type of beats from quaver note

10 : 10 Beats per Bar

8 : Type of beats from quaver note

Best Of Luck 😊

Music Teacher – Yazan Sabbagh