

# Comparing Fractions

## Worksheet A

### Find Equivalent Fractions

Level 1   Level 2   Level 3

I Fill in the blanks.

- a Shade the parts to find equivalent fractions of  $\frac{1}{5}$ .

Then write the fraction.

--	--	--	--	--

--	--	--	--	--	--	--	--	--	--

$$\frac{1}{5} = \frac{\overset{\times 2}{2}}{\underset{\times 2}{10}}$$

If you are not sure,  
you can refer to  
Student's Book  
pages 205 to 207.



Activity Book p. 161

- b Shade the parts to find equivalent fractions of  $\frac{1}{4}$ .  
Then write the fraction.



$$\frac{1}{4} \stackrel{\times 2}{=} \frac{\boxed{2}}{\boxed{8}}$$

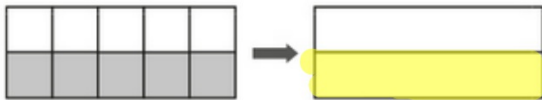
**Activity Book p. 162**

- c** Shade the parts to find equivalent fractions of  $\frac{2}{8}$ .  
Then write the fraction.



$$\frac{2 \div 2}{8 \div 2} = \frac{1}{4}$$

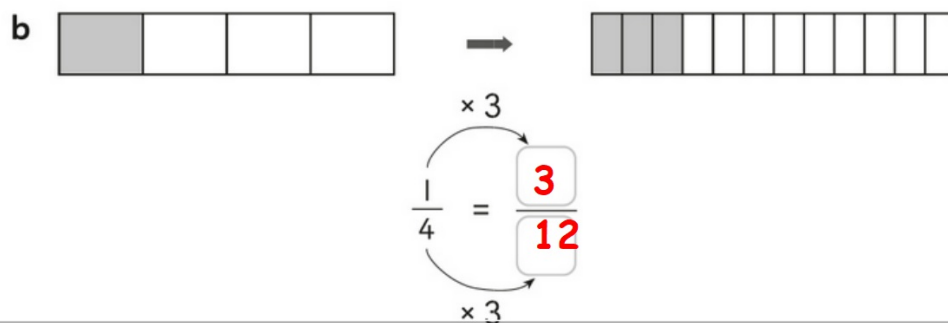
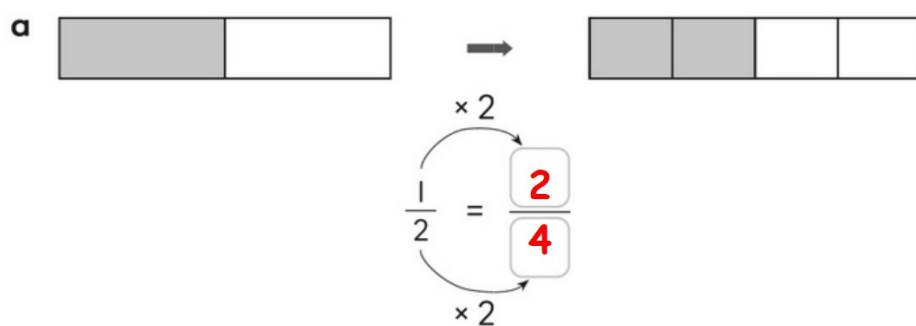
- d** Shade the parts to find equivalent fractions of  $\frac{5}{10}$ .  
Then write the fraction.



$$\frac{5 \div 5}{10 \div 5} = \frac{1}{2}$$

## Activity Book p. 162

2 Fill in the blanks.



Activity Book p. 163



$$\frac{2}{10} = \frac{1}{5}$$

Diagram illustrating the simplification of the fraction  $\frac{2}{10}$  to  $\frac{1}{5}$ . The fraction is shown with a curved arrow above it labeled  $\div 2$  and a curved arrow below it labeled  $\div 2$ . The simplified fraction  $\frac{1}{5}$  is shown in a box.



$$\frac{4}{8} = \frac{1}{2}$$

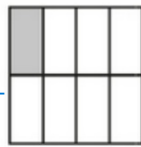
Diagram illustrating the simplification of the fraction  $\frac{4}{8}$  to  $\frac{1}{2}$ . The fraction is shown with a curved arrow above it labeled  $\div 4$  and a curved arrow below it labeled  $\div 4$ . The simplified fraction  $\frac{1}{2}$  is shown in a box.

3 a Which fractions are equivalent to  $\frac{1}{4}$ .

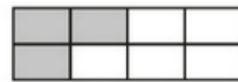
Put a tick (✓) in the boxes.



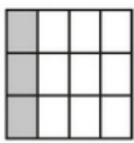
$$\frac{2}{8} \div 2 = \frac{1}{4}$$



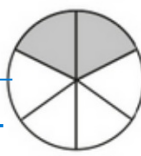
$$\frac{1}{8}$$



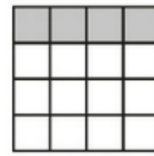
$$\frac{3}{8}$$



$$\frac{3}{12} \div 3 = \frac{1}{4}$$



$$\frac{2}{6}$$



$$\frac{4}{16} \div 4 = \frac{1}{4}$$

b Then write the equivalent fractions.

$$\frac{1}{4} = \frac{2}{8} = \frac{3}{12} = \frac{4}{16}$$

## Activity Book p. 164

4 Fill in the blanks.

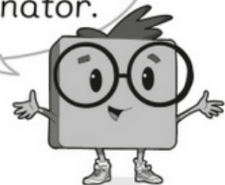
a  $\frac{1 \times 6}{10 \times 6} = \frac{6}{\boxed{60}}$

b  $\frac{1 \times 9}{2 \times 9} = \frac{\boxed{9}}{18}$

c  $\frac{3 \times 4}{\boxed{4} \times 4} = \frac{12}{16}$

d  $\frac{\boxed{2} \times 3}{5 \times 3} = \frac{6}{15}$

Start with the  
given numerator  
or denominator.



e Explain how you found the equivalent fractions above.

From the given numerator or denominator, decide which number to multiply by.

Then multiply the denominator or numerator to get the equivalent fraction by the same number.

5 Fill in the blanks.

a  $\frac{4 \div 2}{10 \div 2} = \frac{2}{\boxed{5}}$

b  $\frac{8 \div 8}{16 \div 8} = \frac{\boxed{1}}{2}$

c  $\frac{15 \div 5}{\boxed{50} \div 5} = \frac{3}{10}$

d  $\frac{\boxed{5} \div 5}{20 \div 5} = \frac{1}{4}$

6 a Circle the equivalent fractions.

$\frac{9}{30}$

$\frac{3}{30}$

$\frac{3}{10}$

$\frac{15}{50}$

$\frac{6}{40}$

R

E

P

C

S

$\frac{3 \times 5}{10 \times 5} = \frac{15}{50}$

$\frac{3 \times 3}{10 \times 3} = \frac{9}{30}$

b Rearrange the letters and fill in the boxes to solve the riddle.

I make a loud sound when I'm changing. When I change,

I get bigger but weigh less. What am I?

— **p** — op — **c** — o — **r** — n



- 7 The hour hand of a clock moves from 2 o'clock to 11 o'clock.



- a What fraction of the clock has the hour hand covered?


**9**

**12**

- b Find an equivalent fraction of your answer in a.

**3**

**4**

-  c Write another way the hour hand can move to cover the same fraction as a.

**The hour hand moves from 1 o'clock to 10 o'clock.**