

## Lesson A: Flowers (1.1)

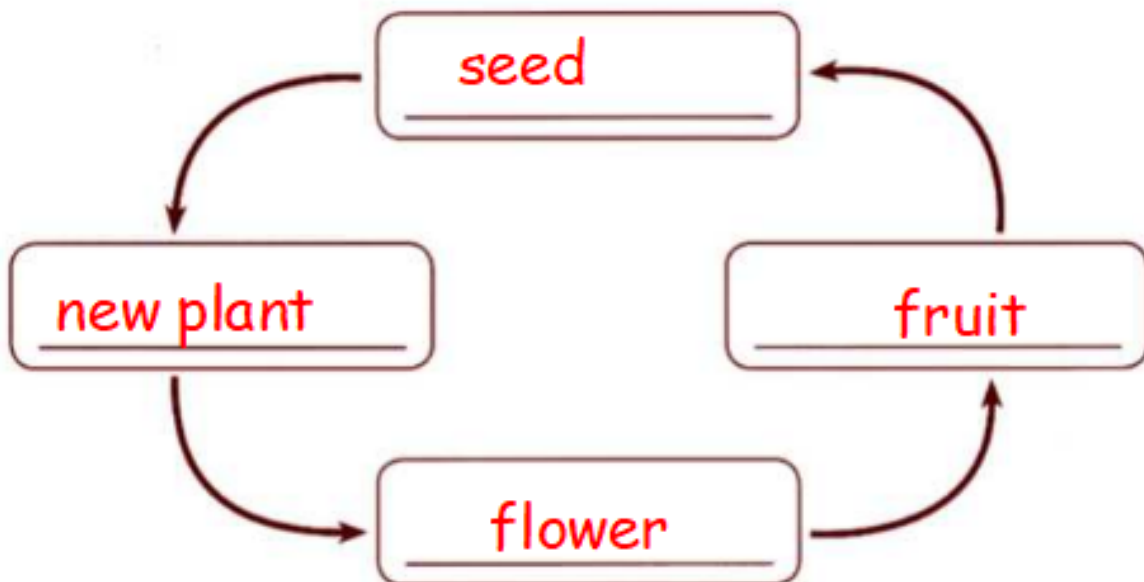
Name: \_\_\_\_\_

Date: \_\_\_\_\_

1. In this exercise, you will think about how flowers help plants to reproduce. The diagram shows how flowers help plants to reproduce and form new plants. Use the words in the box to help you label the diagram.

Pay attention to the arrows.

flower	new plant	seed	fruit
--------	-----------	------	-------

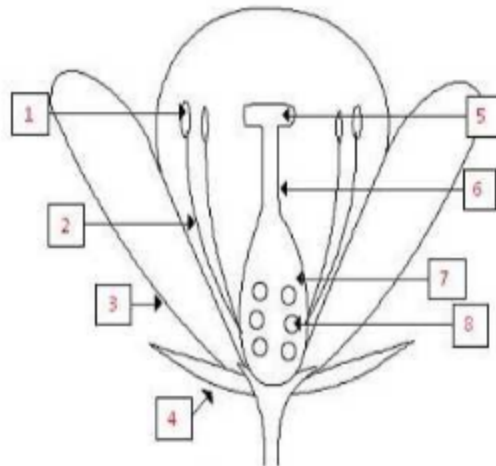


b. How do flowers help plants to reproduce?

by making seeds

The picture of the flower has numbers on it. Match the flower part with the correct number on the flower.

petal	3
sepal	4
stigma	5
ovary	7
anther	1
egg/ female sex cell/ ovule	8
style	6
filament	2



3. Fill in the blanks.

1. The male part of the flower is called the stamen

and it is made of anther and filament.

2. The female part of the flower is called the

carpel and it is made of stigma,

style, ovary and ovule/egg.

3. The anther produces pollen.

4. Plants can be classified according to the presence or absence of

flowers into : flowering and

non-flowering plants

4. Label the parts of the flower.

