

## Lesson A: Flowers (1.1)

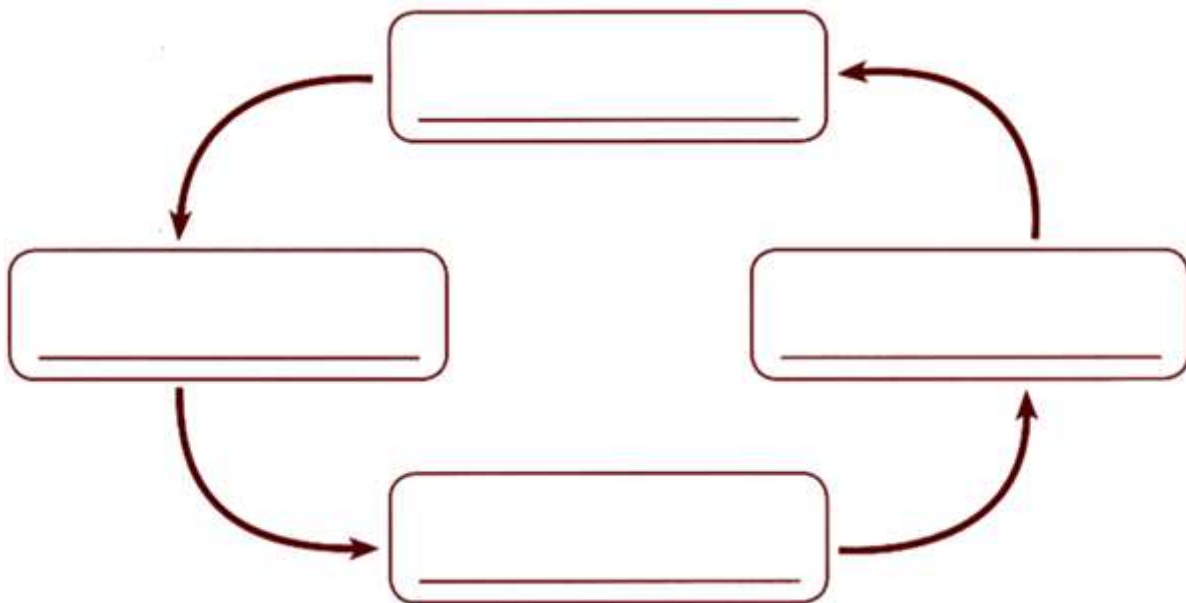
Name: \_\_\_\_\_

Date: \_\_\_\_\_

1. In this exercise, you will think about how flowers help plants to reproduce. The diagram shows how flowers help plants to reproduce and form new plants. Use the words in the box to help you label the diagram.

Pay attention to the arrows.

flower	new plant	seed	fruit
--------	-----------	------	-------



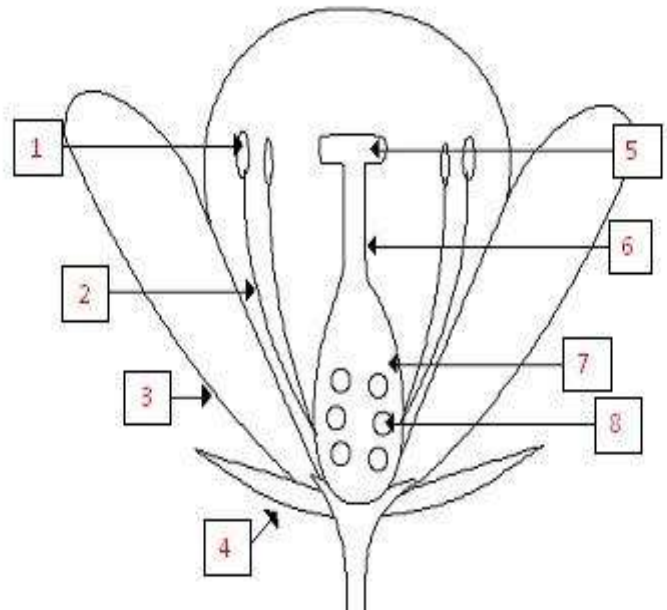
b. How do flowers help plants to reproduce?

---

2. In this exercise, you will label a drawing of a flower.

The picture of the flower has numbers on it. Match the flower part with the correct number on the flower.

petal	
sepal	
stigma	
ovary	
anther	
egg/ female sex cell/ ovule	
style	
filament	



3. Fill in the blanks.

1. The male part of the flower is called the \_\_\_\_\_

and it is made of \_\_\_\_\_ and \_\_\_\_\_.

2. The female part of the flower is called the

\_\_\_\_\_ and it is made of \_\_\_\_\_,

\_\_\_\_\_, \_\_\_\_\_ and \_\_\_\_\_.

3. The \_\_\_\_\_ produces pollen.

4. Plants can be classified according to the presence or absence of

\_\_\_\_\_ into : \_\_\_\_\_ and

\_\_\_\_\_.

4. Label the parts of the flower.

