

Formative Assessment 1

Q1. Many plants have flowers.

Why do plants have flowers?

Circle the correct answer.

growth

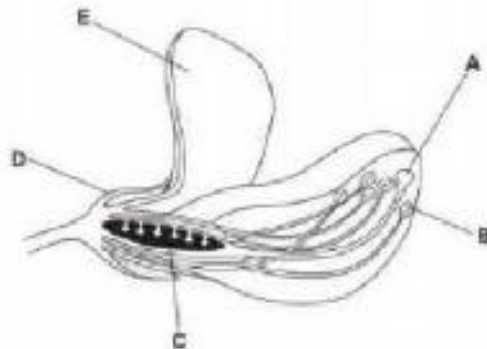
nutrition

reproduction

movement

Q2. Flowers have male and female organs.

The diagram shows the parts of a flower.



a. Which labelled part of the flower is a male organ?

Choose from A, B, C, D or E.

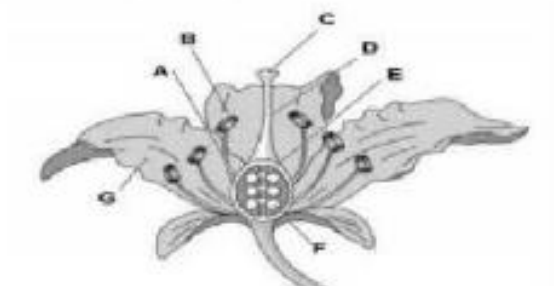
The answer is letter B.

b. Which two labelled parts of the flower are female organs?

Choose from A, B, C, D or E.

The answer is letters A and C.

Q3. Look at the picture, pay attention to the letters.



a. Match the letter of the part to its function.

Letter	Function
B	produces pollen
E	contains ovules
G	the coloured part of the flower
C	This part receives the pollen, it is sticky.

b. In the flower above, write the name of the following parts.

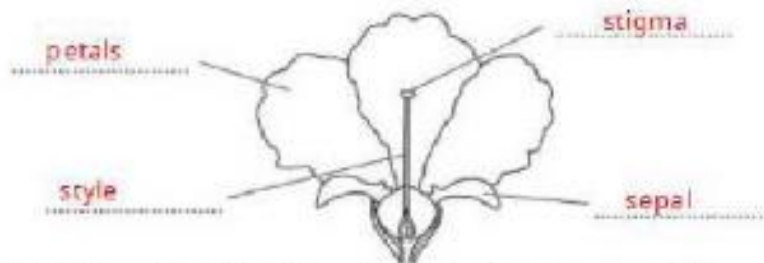
Letter A is the Filament.

Letter F is the Ovule.

c. Plants that produce flowers are called
flowering plants.

Q4. Mike draws a diagram of a flower.

a. Help him label the parts of the flower.



b. Mike has not included the male parts of a flower on his diagram. Look at the picture of the male parts of a flower.

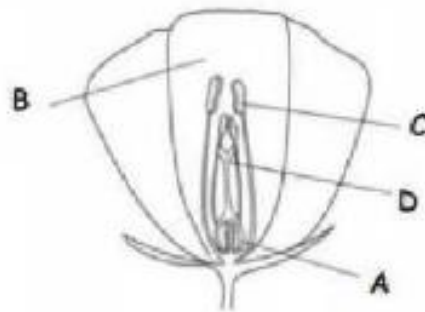
. Write the name of the male part of the flower.

Stamen

b. On the drawing, circle the part that produces the pollen.



Q5. The following is a picture of a flower.



Look at it carefully then answer the questions.

Write the letter of the part of the flower that matches each description below.

- a. This part of the flower attracts insects. B
- b. This part of the flower is sticky. D
- c. This part of the flower contains ovules. A

Q6. Answer the following questions.

- a. Write one example of a non-flowering plant. Ferns
- b. Write two things that prove that a tree is a plant.
 - 1. It has leaves
 - 2. It has roots /stem /flowers/fruits