



## Rosary School \ Marj Elhamam

Name : .....

Subject: Worksheet (1) / unit (1)

Date : / 9 / 2025

Grade : 6 ( )

### Analysing and displaying data

**Q1.** Find the **mode** of each set of data:

a) 2, 5, 6, 5, 8, 5, 7 mode= \_\_\_\_\_

b) 9, 3, 6, 9, 2, 6 mode= \_\_\_\_\_

c) 1, 2, 3, 4, 5 mode= \_\_\_\_\_

d) 11, 15, 11, 20, 22, 20 mode= \_\_\_\_\_

e) 8, 9, 8, 7, 9, 10, 8 mode= \_\_\_\_\_



**Q2.** Salim did a survey of favorite colors, the results are shown in the following frequency table.

Color	Frequency
Red	10 students
Blue	12 students
Green	7students
Yellow	12 students

What is the **mode** color? \_\_\_\_\_

**Q3.** A shopkeeper records the number of ice creams sold each day:

**12, 15, 18, 15, 20, 18, 15**

Find the **mode**. \_\_\_\_\_

**Q4.** A dice was rolled 12 times, and these numbers came up:

**2, 5, 3, 2, 4, 5, 6, 2, 1, 5, 2, 3**

Which number is the **mode**? \_\_\_\_\_

**Q5.** Find the **median** of each set of data:

a) 3, 7, 9, 11, 13                      median= \_\_\_\_\_

b) 18, 25, 22, 20, 19                  median= \_\_\_\_\_

c) 12, 15, 18, 21, 24                  median= \_\_\_\_\_

d) 5, 10, 15, 20, 25, 30               median= \_\_\_\_\_

e) 2, 4, 6, 8, 10, 12, 14               median= \_\_\_\_\_

f) 1, 3, 5, 7, 9, 11, 13, 15            median= \_\_\_\_\_

**Q6.** The ages of 7 cousins are:

**5, 8, 10, 6, 12, 7, 9**

What is the **median** age? \_\_\_\_\_

**Q7.** Five students got these marks in a spelling test:

**18, 25, 22, 20, 19**

What is the **median** score? \_\_\_\_\_

**Q8.** Find the **mean** of each set of data:

a) 6, 8, 10, 12, 14                      mean= \_\_\_\_\_

b) 5, 7, 9, 11                            mean= \_\_\_\_\_

c) 5, 10, 15, 20, 25                   mean= \_\_\_\_\_

d) 3, 6, 9, 12, 15                      mean= \_\_\_\_\_

e) 2, 4, 6, 8, 10, 12                   mean= \_\_\_\_\_

**Q9.** A shopkeeper counted the apples in 4 baskets, here are the results:

**15, 20, 22, 18**

What is the **mean** of apples in a basket?

mean= \_\_\_\_\_

**Q10.** Find the **range** of each set of data:

a) 3, 7, 9, 12, 15

Range= \_\_\_\_\_

b) 10, 20, 25, 30, 40

Range= \_\_\_\_\_

c) 5, 8, 12, 6, 10

Range= \_\_\_\_\_

**Q11.** Ali recorded the number of pages he read in 5 days:

**3, 7, 9, 12, 15 pages.**

What is the **range** of pages Ali read? \_\_\_\_\_

**Q12.** Which of these are **discrete** and which are **continuous**?

a) Number of pencils in your bag.

\_\_\_\_\_

b) Height of your teacher.

\_\_\_\_\_

c) Number of goals scored in a match.

\_\_\_\_\_

d) Time taken to run a race.

\_\_\_\_\_

**Q13.** The scores of 20 students in a spelling quiz are:

**5, 6, 7, 5, 8, 6, 7, 5, 9, 6, 8, 7, 6, 5, 7, 8, 9, 6, 7, 5**

Score	Tally	Frequenc
5		
6		



a) Complete table

Score	Tally	Frequency
7		
8		
9		

the frequency below:

b) What is the **mode**? \_\_\_\_\_

**Q14.** The ages of 30 students in a club are:

**10, 11, 10, 12, 13, 11, 14, 12, 10, 13, 12, 11, 10, 14, 13, 12, 11, 10, 15, 12, 13, 11, 12, 14, 13, 12, 11, 10, 13, 12**

Complete the grouped frequency table below.

Age (years)	Tally	Frequency
10–11		
12–13		
14–15		

**Q15.** A survey was conducted to find out the **favorite sports of boys and girls** in a class.

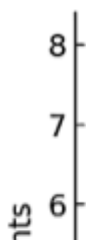
The data collected is shown by the following table:

Sport	Boys	Girls
Football	8	2
Basketball	5	3
Swimming	3	6
Tennis	2	4

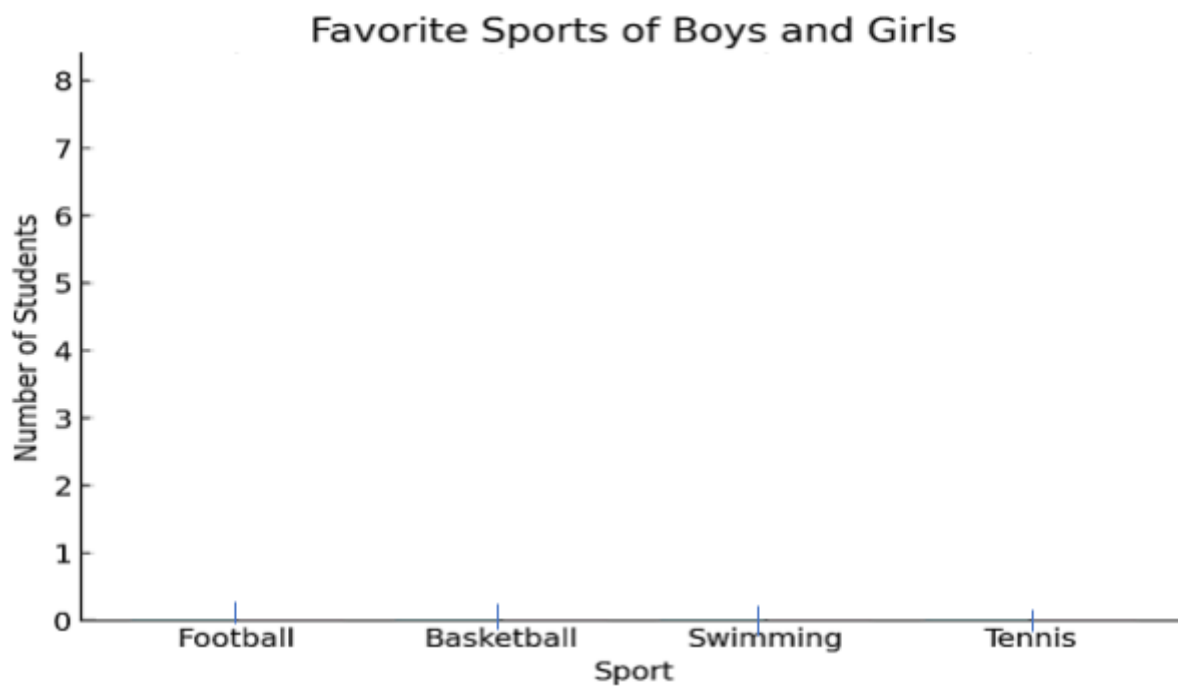


a) Draw a dual bar chart to represent the data.

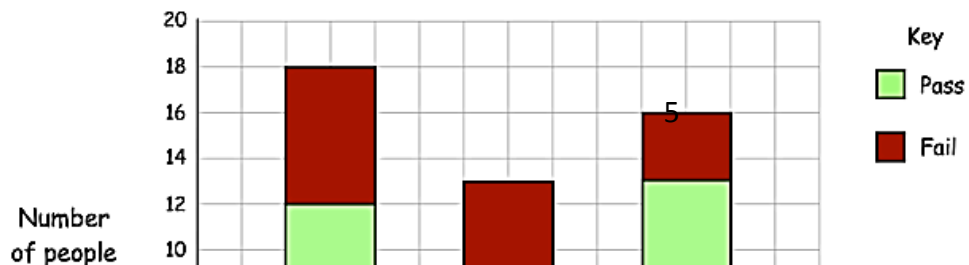
**Favorite Sports of Boys and Girls**



b) Draw a compound bar chart to represent the data.



**Q16.** The composite bar chart shows the results of driving tests one morning in three different test centers.



a) How many people passed their driving test at the Bristol test centre?

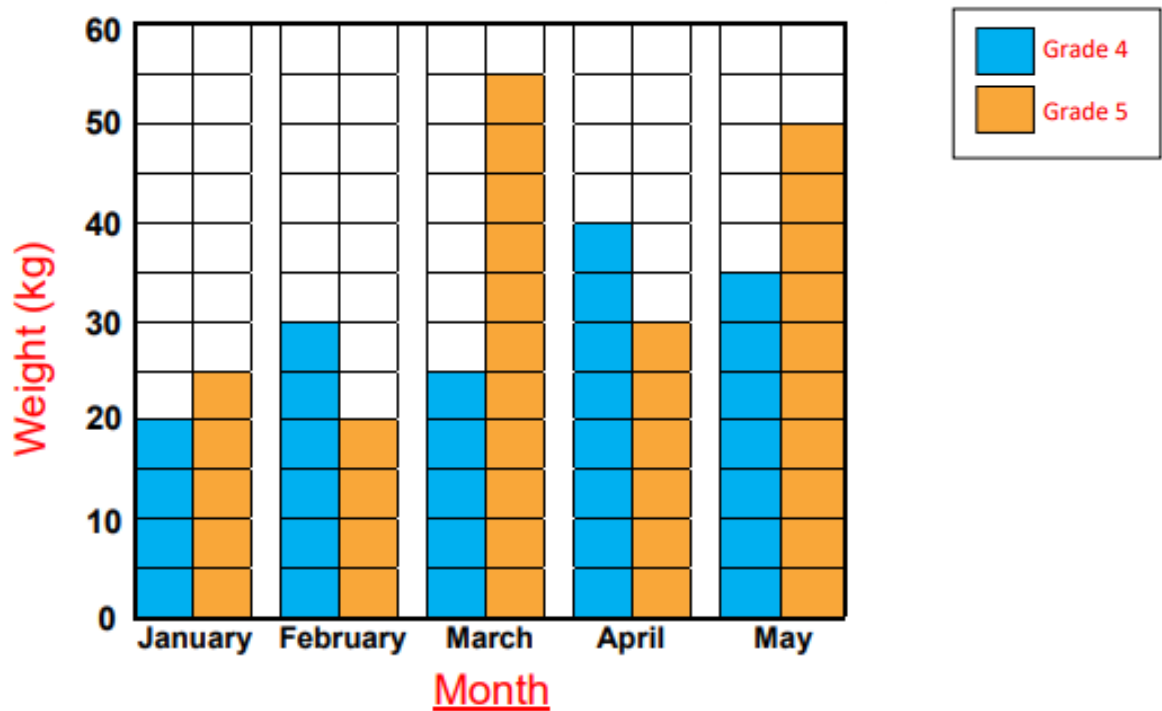
\_\_\_\_\_

b) How many people failed their driving test at the Taunton test centre?

\_\_\_\_\_

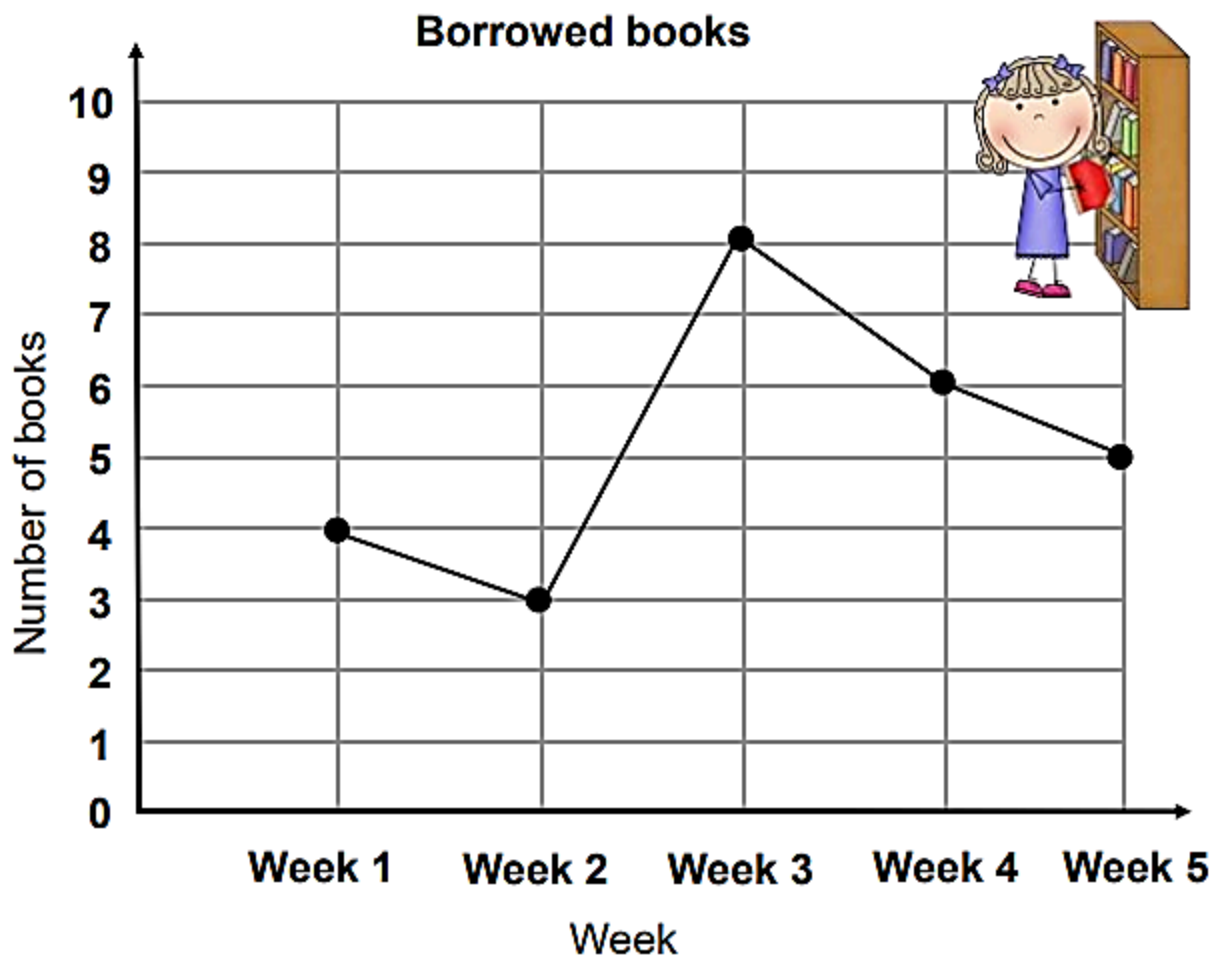
c) How many people tested at Swindon test centre ? \_\_\_\_\_

**Q16.** Students collected and recorded the weight of old newspapers for 5 months.



- a) In which month did grade 4 pupils collect the most newspapers?  
\_\_\_\_\_
- b) In which month did grade 5 pupils collect the fewest newspapers?  
\_\_\_\_\_
- c) How many kg of newspapers did the Grade 5 students collect?  
\_\_\_\_\_
- d) Which month has the fewest newspapers collected?  
\_\_\_\_\_
- e) What is the difference between the total collection of Grades 4 and Grade 5?  
\_\_\_\_\_

recorded the number of books she borrowed for 5 weeks.



a) How many books were borrowed on week 4?

\_\_\_\_\_

b) What week did Carol borrow 6 books?

\_\_\_\_\_

c) How many more books were borrowed on week 1 than week 2?

\_\_\_\_\_

d) What week did Carol borrow the most books?

\_\_\_\_\_

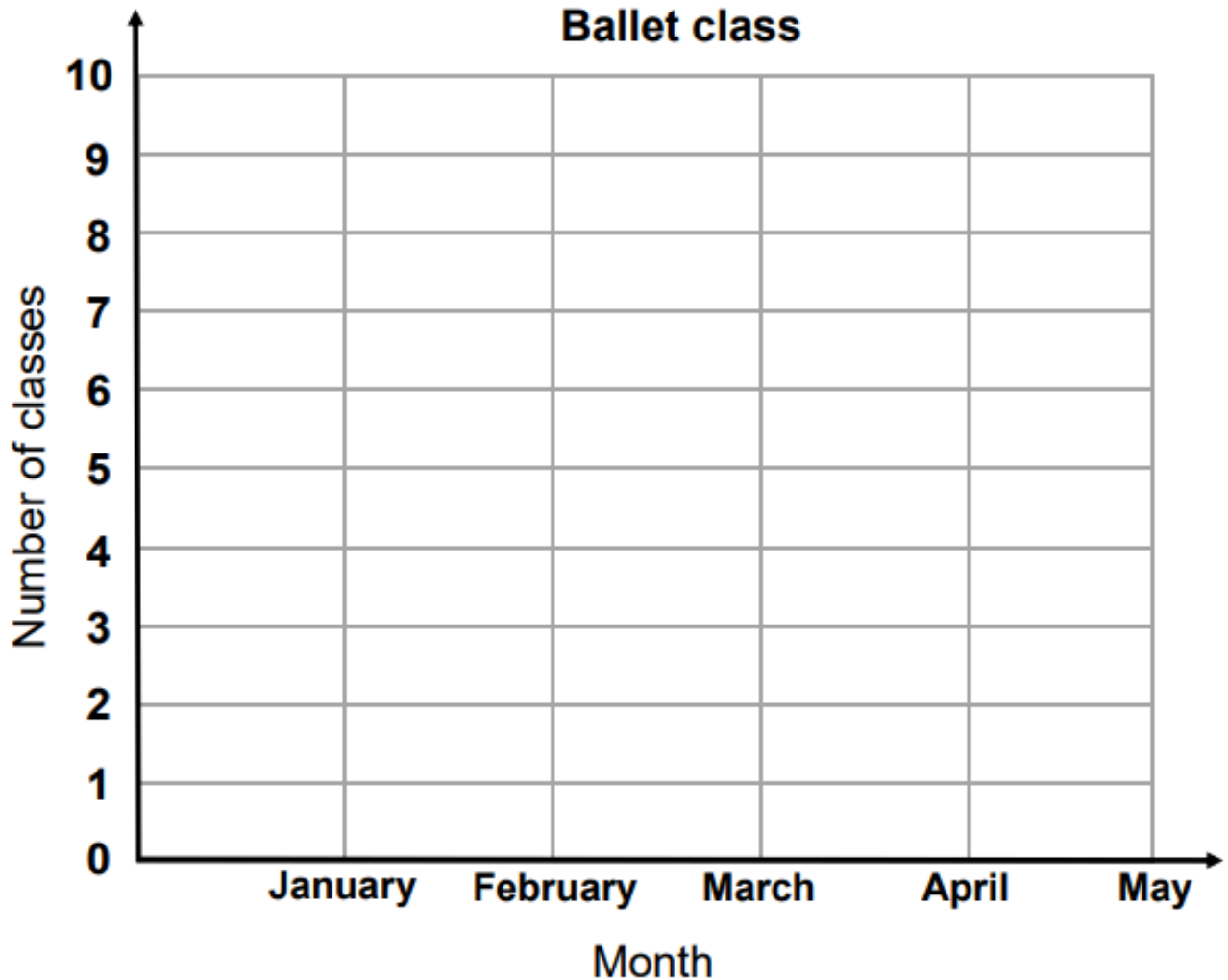
e) What week did Carol borrow the fewest books?

\_\_\_\_\_



**Q18.** Mary recorded the number of ballet classes she had for 5 months. Draw a line graph using the given data.

Month	Number of classes
January	8
February	7
March	6
April	10



Teachers: Eman Nabas and Qusie Hijazeen