

Rosary School / Marj El Hamam
Science Worksheet 2.A.1



Name: _____

Grade 2 ()

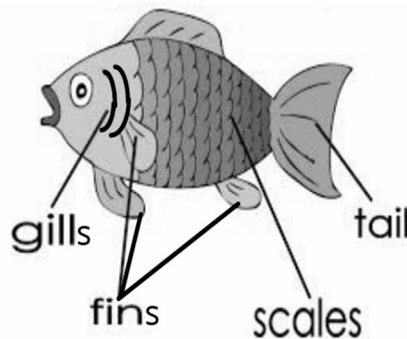
Date: _____

Different Groups of Animals

Objective: Sort different types of animals into different groups depending on their features.

Q1. Fish have specific features which help them survive underwater.

Use the words in the picture only once to complete the sentences.



a) The fish's body is covered with _____.

b) Fish can breathe underwater using their _____.

c) Fish swim fast underwater because they have _____ and

_____.

Q2. Explain why the crocodile and the snake belong to the same group.

Q3. Sharks and whales are very similar, but they belong to different groups.

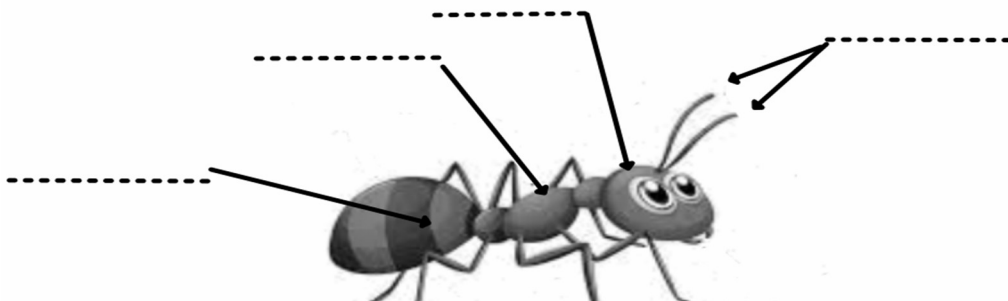
Use the words below to fill the table correctly.

fins	giving birth to live young	tail	gills	laying eggs underwater	flippers	lungs
------	-------------------------------	------	-------	---------------------------	----------	-------

	Whales	Sharks
swim using		
breathe using		
reproduce by		

Q4. Use the words in the box to label the body parts of this ant.

thorax
head
antennae
abdomen



Q5. Observe this picture then circle the correct answer.



a) This animal belongs to the ____ group.

amphibians

reptiles

fish

b) This animal in the picture reproduces by ____

laying eggs on land

laying eggs in water

c) In the first stage of its life, it breathes using ____

gills

nose

lungs

d) As it becomes an adult, it develops ____ to breathe.


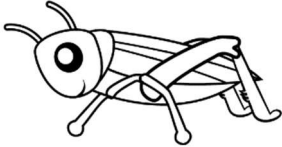

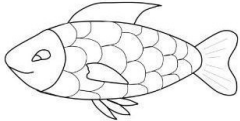
lungs

tail

gills

Q6. The table shows two groups of animals.

Write the name of each group in the empty boxes under.

Group 1	Group 2
 	 

Q7. Guess which group I belong to from my features.

a) I have 2 legs. My body is covered in feathers. I have a beak. I can fly.

Which group am I in? _____

b) I have hair or fur covering my body. I reproduce by giving birth to live young, and my babies feed on their mother's milk.

Which group do I belong to? _____

c) I lay eggs with leathery shells on land. My body is covered with dry scales.

Which group am I in? _____

