

Thinking cap

Do I breathe differently when I'm sleeping?



No. We breathe all the time.

Breathing is the way we get oxygen into our body.

5 mins



Let's Explore!

What do I feel when I place my hand on my chest?

1. Work with a partner.
2. Keep still and place your hand in the middle of your chest.
3. Can you feel something beating in your chest? **yes**
4. Describe to your partner what the beating feels like.
5. Share with your partner what you think causes the beating.



4. a thumping sound, horses galloping

5. the heart

Let's Learn

p.64

What Are Some Organs and their Functions in Humans?

You have learnt in Stage I about the external parts of the human body such as the head and the foot. There are also parts of the human body that are found inside the body. These parts are called **organs**. Each organ has an important function, or job, that helps keep us alive and healthy.



brain



heart



lungs



stomach



intestines

Some of the organs in the body are the brain, heart, lungs, stomach and intestines.

Can you find these organs in your body? Point to the locations on your body where you think the organs are.



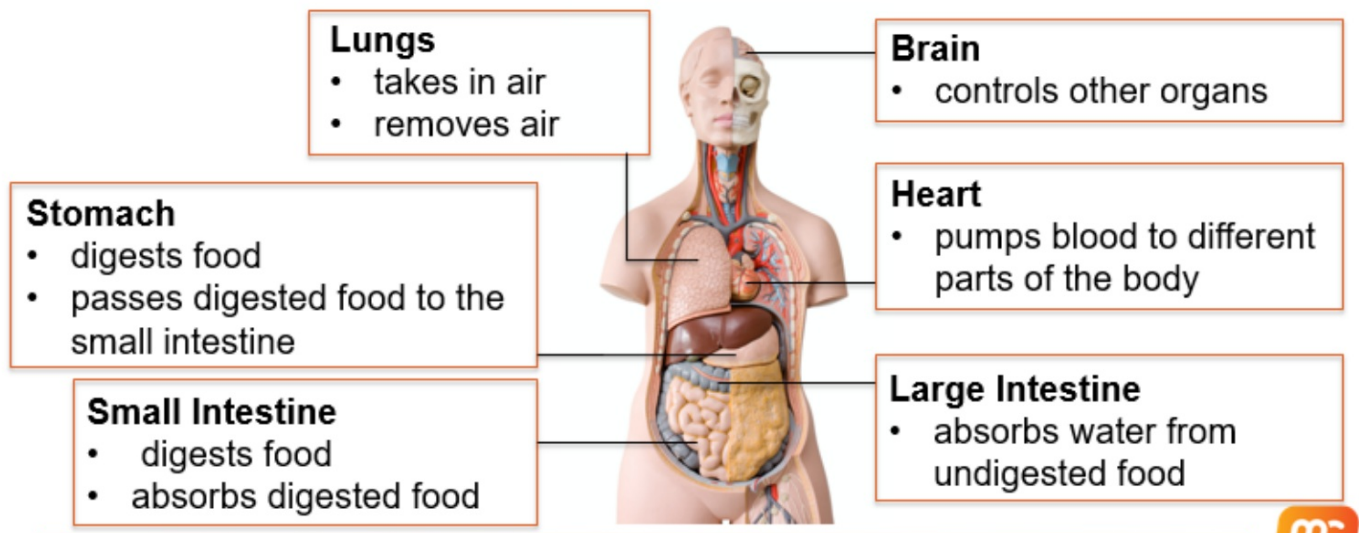
p.70



organ

a part of the body that has a specific function

What are the functions of some organs?

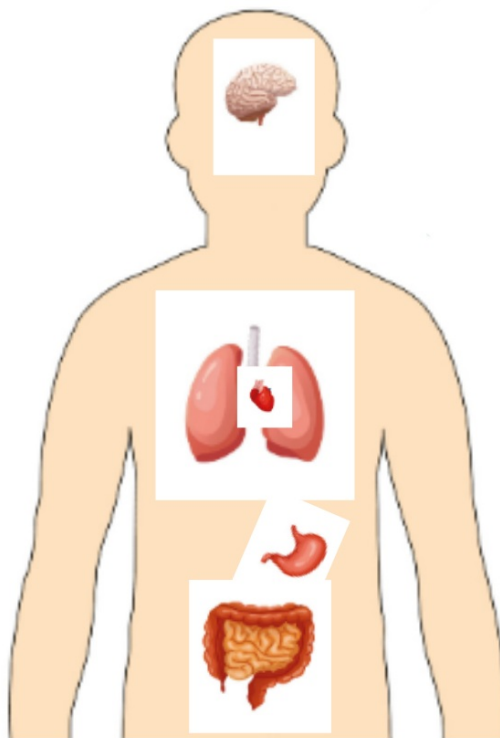




As the organs are found inside the body, it is difficult for us to study them. A model can help us study them more easily. We can use pictures of the organs or a 3D model that is of a similar size as a real human body. As a 3D model can be observed closely and touched, it helps us to learn about the human organs.

p.66

Choose stickers from the back of the book. Paste the parts of the body in the correct places.



Practice Worksheet

p.68

I. Tick (✓) the correct box beside each sentence.

	True	False
Flowers help a plant to reproduce.	<input checked="" type="checkbox"/>	<input type="checkbox"/>
Plants need sunlight only to keep warm.	<input type="checkbox"/>	<input checked="" type="checkbox"/>
The stem takes in water when it rains.	<input type="checkbox"/>	<input checked="" type="checkbox"/>
Roots take in minerals from the soil.	<input checked="" type="checkbox"/>	<input type="checkbox"/>
Each organ has a special function in the body.	<input checked="" type="checkbox"/>	<input type="checkbox"/>
The lungs pump blood around the body.	<input type="checkbox"/>	<input checked="" type="checkbox"/>
Food is broken down only in the stomach.	<input type="checkbox"/>	<input checked="" type="checkbox"/>
The heart controls other organs in the human body.	<input type="checkbox"/>	<input checked="" type="checkbox"/>

2. Sam is carrying out an investigation. He uses two identical plants for his investigation, Plant A and Plant B. Each plant receives the same amount of sunlight and has the same amount of soil in the pot. Plant A is given water, while plant B is not given water. After ten days, Sam observes the plants.

Which of these is the scientific question that Sam is investigating?

Tick (✓) the **correct** box.

How does light affect plant growth?

☐

How does soil affect plant growth?

☐

How does temperature affect plant growth?

☐

How does water affect plant growth?

☒

3. Aishah had two plants. She placed one plant in a fridge and the other plant in the classroom. She watered the plants every day. After ten days, this is what she observed.



Plant A

Plant B

Which plant was placed in the fridge? Explain your reasons.

Plant A. The plant in the fridge did not get enough sunlight.
It was also kept at a low temperature.

4. Draw a line to match each human organ to its function.

